



HYLANDS  
ESTATE



## Funeral Receptions



Hylands Estate provides an elegant and tranquil setting for you and your guests to reflect and celebrate the life of a loved one. Set amongst 574 acres of historic, landscaped parkland, Hylands House is a beautiful grade II\* listed building, with meticulously restored rooms. Adjacent to the house is Hylands Grand Pavilion offering a contemporary alternative for larger gatherings.

Arranging a funeral reception can add to the stress of losing a family member or a close friend, but our caring and experienced team will help to ease the pressure of arrangements at this difficult time.

Family and friends can join you for refreshments in our elegantly appointed reception rooms or our spacious Pavilion. We have a variety of menus to choose from and these can be tailored to your requirements.

For further information please do not hesitate to contact our Events Team.

Please note that Hylands Estate cannot accommodate funeral services. However, we are only a 5-minute car journey from Chelmsford Crematorium and Chelmsford City centre.

W [hylandsestate.co.uk](http://hylandsestate.co.uk)  
E [hylands@chelmsford.gov.uk](mailto:hylands@chelmsford.gov.uk)  
T +44 (0)1245 605500

Hylands Estate  
London Road  
Chelmsford CM2 8WQ





HYLANDS  
ESTATE

## Funeral Reception Hourly Pricing

Charges are per hour and including VAT with a minimum of a 2 hour hire



### Hylands House

Up to 100 guests

£185

### Grand Pavilion

Between 100 - 300 guests

£260

This price allows you exclusive use of the appropriate rooms, furnishings to accommodate the reception and free parking on site.

Additionally Hylands Estate will provide staff to assist on the day.

W [hylandsestate.co.uk](http://hylandsestate.co.uk)  
E [hylands@chelmsford.gov.uk](mailto:hylands@chelmsford.gov.uk)  
T +44 (0)1245 605500

Hylands Estate  
London Road  
Chelmsford CM2 8WQ



HYLANDS  
ESTATE

## Catering Packages

Prices are quoted per guest, inclusive of VAT and served with unlimited tea and coffee.

### Finger Buffet A £14.50

**Selection of sandwiches:**

Honey roasted gammon, English mustard mayonnaise & rocket on white

Tuna mayonnaise with lemon & black pepper on granary

Cream cheese, cucumber & black pepper on granary

Mature cheese, onion & mayonnaise on white

**Savoury items:**

Pork & thyme sausage roll bite

Cheese, tomato & spring onion tartlet

Tomato & sea salted focaccia with garlic hummus & aioli

**Sweet items:**

Mini Victoria sponge

Cranberry & vanilla flapjack

Fresh fruit platter

### Finger Buffet B £16.00

**Open rolls & wraps:**

Chicken & bacon Caesar salad wrap

Pesto, mozzarella, tomato & rocket wrap

Salt beef bagel with gherkin & mustard

Smoked salmon, dill crème fresh & rocket open roll

**Savoury items:**

Essex Pork, chorizo & thyme all butter puff pastry sausage roll

Brie, cranberry & thyme tartlet

Teriyaki chicken skewer

Tomato & sea salted focaccia with garlic hummus & aioli

**Sweet items:**

Chocolate & raspberry brownie bite

Carrot cake & frosting

Fresh fruit platter

Please see overleaf for afternoon tea and bar options.

W [hylandsestate.co.uk](http://hylandsestate.co.uk)  
E [hylands@chelmsford.gov.uk](mailto:hylands@chelmsford.gov.uk)  
T +44 (0)1245 605500

Hylands Estate  
London Road  
Chelmsford CM2 8WQ





HYLANDS  
ESTATE

## Catering Packages

Prices are quoted per guest, inclusive of VAT and served with unlimited tea and coffee.

### Afternoon Tea Buffet     £18.50

#### Finger sandwiches:

Honey roasted ham, English mustard &  
rocket on white

Smoked salmon, lemon & cream  
cheese on granary

Rare roast beef, horseradish & water-  
cress on wholemeal

Cream cheese & cucumber on white

#### Sweet items:

Classic scone, clotted cream & Tiptree Strawber-  
ry jam

Dark chocolate chip & raspberry brownie bites

Mini macarons

Mini Victoria sponge

Carrot cake with cream cheese frosting

Hylands Estate can provide a bar and bar staff for the duration of your hire.  
Any hires requiring a bar will be charged an additional £50.00 (including VAT).

Please note, drinks are not included in this price.

Please confirm your catering order and your bar requirements a minimum of ten days in advance.

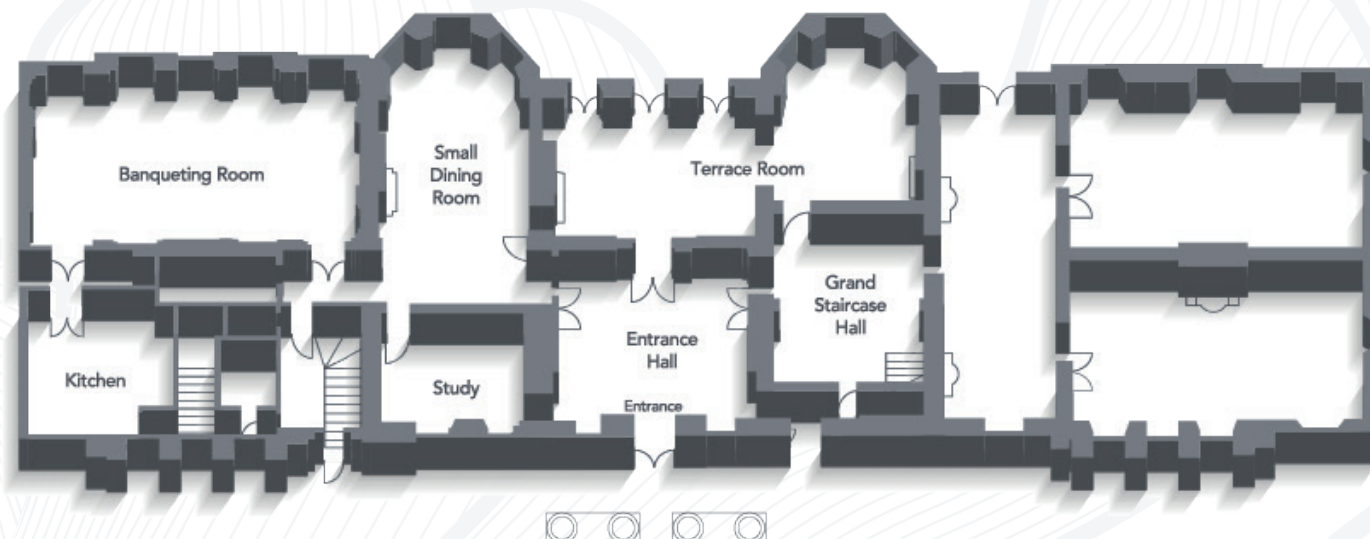
W [hylandsestate.co.uk](http://hylandsestate.co.uk)  
E [hylands@chelmsford.gov.uk](mailto:hylands@chelmsford.gov.uk)  
T +44 (0)1245 605500

Hylands Estate  
London Road  
Chelmsford CM2 8WQ



HYLANDS  
ESTATE

## Floor Plan: Hylands House Ground Floor

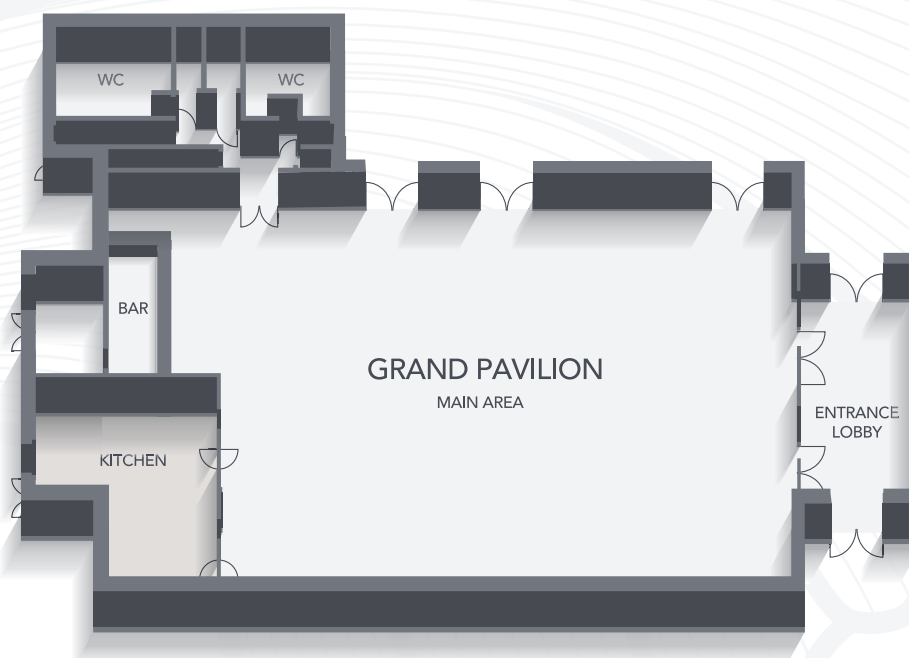


THE BANQUETING ROOM  
Dimensions 12x7m

THE TERRACE ROOM  
Dimensions 13.7x5.5m

## Floor Plan: Grand Pavilion

Capacity: 300  
Dimensions: 25x18m



W [hylandsestate.co.uk](http://hylandsestate.co.uk)  
E [hylands@chelmsford.gov.uk](mailto:hylands@chelmsford.gov.uk)  
T +44 (0)1245 605500

Hylands Estate  
London Road  
Chelmsford CM2 8WQ



HYLANDS  
ESTATE

## A Brief History of Hylands Estate



The house at Hylands was first built in 1730 for a local lawyer, Sir John Comyns. An engraving from around 1770 shows a two-story red brick house surrounded by iron railings with formally laid out gardens. Sir John died in 1740 and the Estate was left to his heirs. However, by 1797 the house had been put up for sale and purchased by a Danish merchant, Cornelius Hendrickson Kortright. Cornelius modernised the property by inviting Sir Humphry Repton, to re-design the House and gardens. A painting in 1819 shows an elegant neo-classical mansion covered in white stucco surrounded by an English landscape-style parkland.

In 1814 Hylands was purchased by Pierre Labouchère, a Dutch-born banker. Following Labouchère's death in 1839 Hylands was bought by John Attwood, a Member of Parliament. He wanted a grander property than the existing Hylands and employed John Buonaratti Papworth to enlarge and redecorate the house. Attwood bought up the surrounding land until the Estate stood at 4,300 acres. However, in 1848 his fortunes changed, and he eventually moved to France. In 1858, the now 843-acre estate was bought by Arthur Pryor and his wife Elizabeth.

In 1905 Sir Daniel Gooch, a sailor, and explorer, came to live at Hylands. He and his wife entertained regularly and in 1912 the family hosted the first British aero —a wedding with the bridegroom and fellow aviators arriving by plane. When war broke out in 1914 Hylands was used as a hospital. John Mackenzie Hanbury purchased Hylands in 1922. However, he was destined never to live at Hylands; he died suddenly in 1923 leaving Hylands to his wife, Christine. Christine continued to live at Hylands until she died in 1962.

In 1964 the contents of the house were put up for auction and in 1965 Hylands was once again up for sale. The house, in a poor state of disrepair, was eventually bought in 1966 by Chelmsford Borough Council (now Chelmsford City Council). Although the park was opened to the public it was not until 1986 that the Council was able to set up the Hylands Restoration Fund. Phased work began and eventually in 2005 the house was restored to its early 19th century elegant appearance.

W [hylandsestate.co.uk](http://hylandsestate.co.uk)

E [hylands@chelmsford.gov.uk](mailto:hylands@chelmsford.gov.uk)

T +44 (0)1245 605500

Hylands Estate

London Road

Chelmsford CM2 8WQ





HYLANDS  
ESTATE

## Make an Enquiry



Our experienced team can advise you not only on the venue itself but on all aspects of your hire. To discuss your event further please contact the Events Team.

01245 605500

[hylands@chelmsford.gov.uk](mailto:hylands@chelmsford.gov.uk)

[www.hylandsestate.co.uk](http://www.hylandsestate.co.uk)

### From M25/ London

Exit the M25 at Junction 28 on to the A12 towards Chelmsford and Colchester.

Exit the A12 at Junction 15 on to the A414 dual carriageway toward Chelmsford.

### By Train

Chelmsford Railway Station is in the city centre and a short taxi ride away from Hylands Estate.



## Join us on Social Media



hylandsestate



hylandsestate



Hylands Estate

W [hylandsestate.co.uk](http://hylandsestate.co.uk)

E [hylands@chelmsford.gov.uk](mailto:hylands@chelmsford.gov.uk)

T +44 (0)1245 605500

Hylands Estate

London Road

Chelmsford CM2 8WQ