



HYLANDS  
ESTATE

LUXURY WEDDING  
VENUE IN ESSEX



# The Perfect Setting

Imagine choosing a venue for your wedding day with a team that knows exactly how to make the magic happen. From your very first enquiry to the special day itself, we will be with you every step of the way to turn your dream into a reality.

Our award-winning Grade II\* listed mansion, Hylands House, is set in 574 acres of landscaped parkland. Here, you'll find our beautifully restored ceremony and reception rooms, plus the contemporary Grand Pavilion and outdoor wedding ceremony garden just a few steps away.

Our Pleasure Gardens provide plenty of photo opportunities to capture your day. Stunning parkland and never-ending views of the Essex skyline are all around you. All this, and only 30 minutes from London.

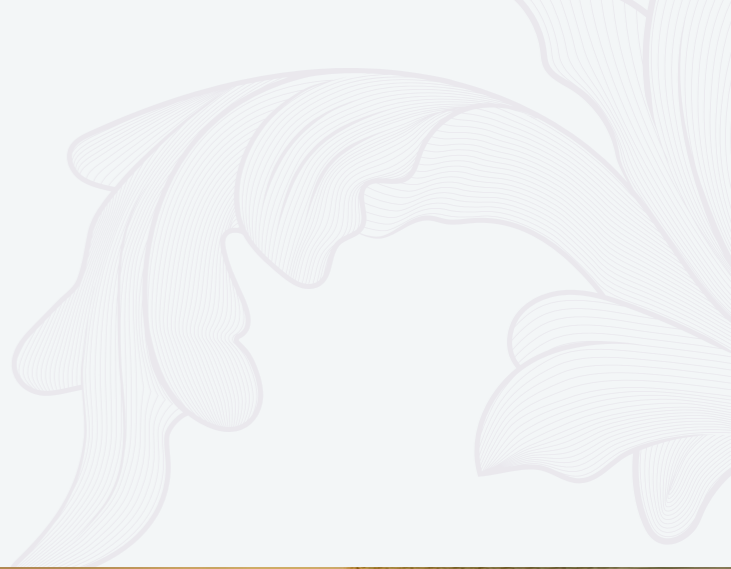
Our experienced, wedding expert team are here to help with planning your day at Hylands Estate. Enquire with us now.





## Luxury & Style

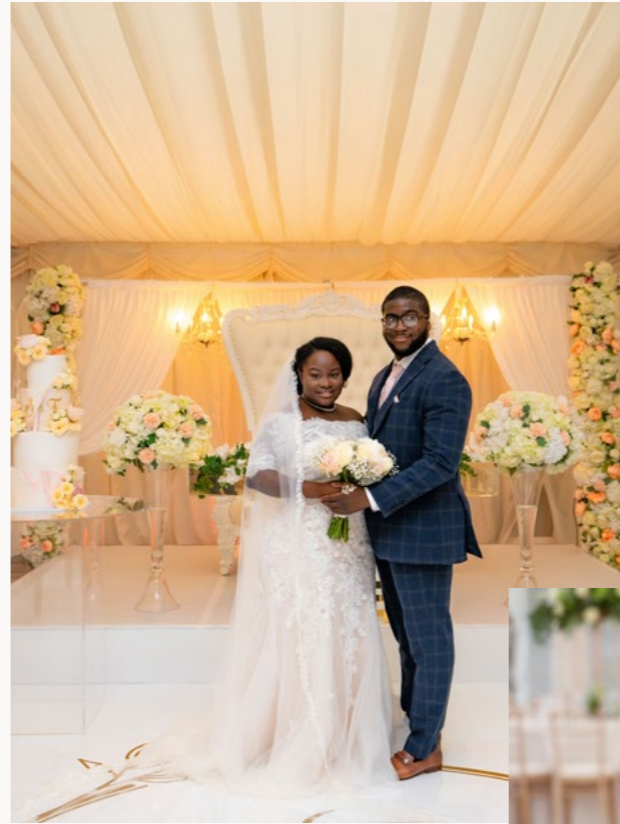
Hylands House is the vision of luxury and opulence. The Banqueting Room provides a stunning backdrop to your wedding ceremony, with its 24 carat gold leaf decorations and silk lined walls. The Drawing Room is a remarkable space with its gilded ceiling and stunning marble fireplace. Our beautifully refurbished wedding suites create a unique link to the estate's gardens with a horticultural theme. The Grand Pavilion offers a stylish celebration space with sparkling chandeliers and ivory drapes.



# Spacious Elegance

The beauty of the venue is in its elegant surroundings and flexibility. Host your ceremony for up to 100 guests in our breath-taking Banqueting Room or the elegant Drawing Room for up to 80 guests. The light and airy open space of the Grand Pavilion can welcome up to 300 guests and is perfect for you to decorate in your own unique way.





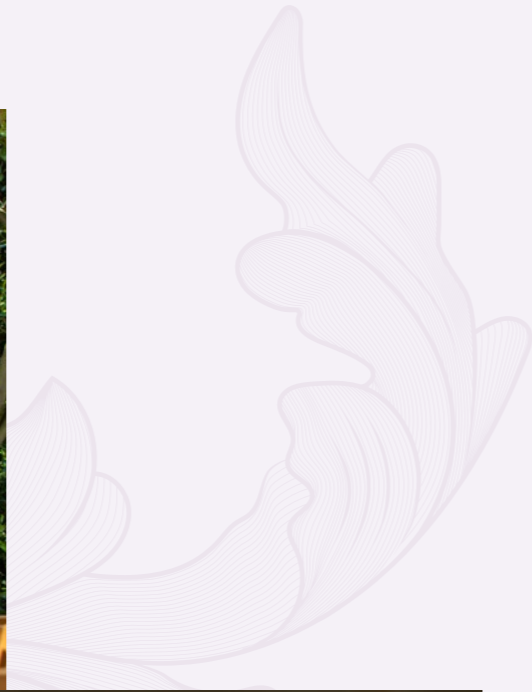


## Beautiful Surroundings

The grounds and formal gardens within Hylands Estate offer the dream setting for your wedding photos. Enjoy exclusive use of the East Terrace Garden for your confetti photo following your ceremony. Take a stroll into the Pleasure Gardens filled with seasonal flowers, including our famous wisteria, roses and lily pond.

Our new outdoor wedding ceremony garden gives couples the chance to say their vows under the graceful tree canopy of the estate's woodland. The area includes a bespoke oak structure for couples and wooden seating in keeping with the woodland theme.







*I couldn't have imagined having my wedding anywhere else. Thank you so much your support in making our wedding the most incredible day of our lives.*

*Everything went so smoothly with the help of the Hylands staff. You and your team provided first class service before the wedding day and on the day. My husband and I are extremely grateful*

P&R, 2022

# Say your vows in a spectacular setting

Making your commitment to one another in front of family and friends is such a special moment, that you deserve the elegant surroundings to match.





## The Banqueting Room

The beautifully restored neo-baroque Banqueting Room provides the perfect setting for your wedding ceremony for up to 100 guests. With 24 carat gold leaf and scroll decorations, silk lined walls and hand painted wall motifs, this opulent space provides a stunning backdrop for your wedding ceremony or reception space.

Its elegant floor to ceiling windows let the light stream in and give a stunning view of the back lawn, and the sweeping parkland beyond.

---

### ROOM DIMENSIONS

12m x 7m

### ROOM CAPACITY

Ceremony – maximum 100 guests,  
or 80 guests if dining

### ROOM HIGHLIGHTS

Coffered, gilded and hand painted ceiling  
French marble fireplace, as well as stunning  
views of lawn, parkland & Serpentine Lake

# The Drawing Room

The Drawing Room is a remarkable space for up to 80 guests. It has a fabulously ornate and gilded ceiling, complemented by the beautiful hand-painted wall motifs and a stunning marble fireplace.

With a dual aspect overlooking the beautiful parkland and views opening out onto the East Terrace, the Drawing Room provides a wonderful setting for your wedding ceremony.

After your ceremony, the East Terrace provides the perfect visual opportunity for both romantic and group photographs as well as romantic confetti photographs.

---

## ROOM DIMENSIONS

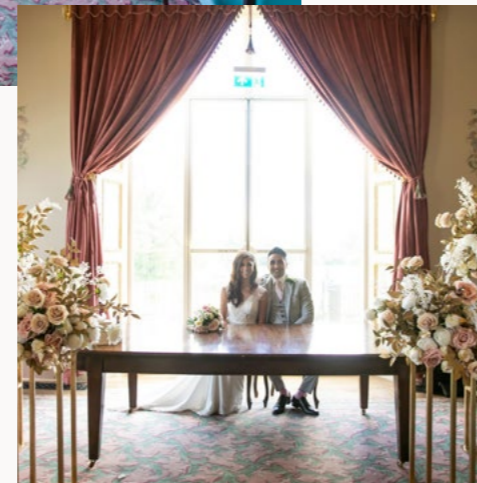
11m x 6.5m

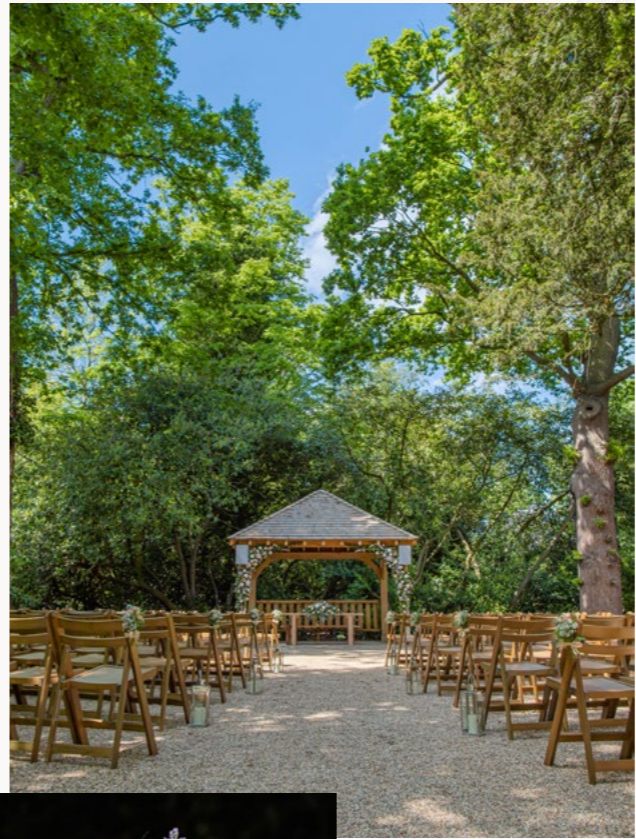
## ROOM CAPACITY

Ceremony – maximum 80 guests

## ROOM HIGHLIGHTS

Ornate and gilded ceiling, beautiful hand-painted walls, lavish white marble fireplace, all overlooking beautiful parkland





# Outdoor Ceremony Garden

Our new outdoor ceremony garden gives couples the chance to say their vows under the graceful tree canopy of the estate's woodland. The area includes a bespoke oak structure for couples and wooden seating in keeping with the woodland theme.

The area has been professionally landscaped by the Hylands Estate's parks team, with rhododendrons, azaleas and seasonal bulbs, with the trees providing a beautiful natural canopy.

---

### SPACE CAPACITY

Ceremony – maximum 100 guests

### SPACE HIGHLIGHTS

Bespoke oak structure and purpose-built seating, discreet outdoor sound system, close to Hylands House and Grand Pavilion whilst staying in the natural beauty of the park and gardens

# The Grand Pavilion

Complete with sparkling chandeliers and ivory drapes, the Grand Pavilion offers a stylish celebration space for up to 300 guests. It is perfect for you to decorate in your own unique way. The floor-to-ceiling windows allow natural light to wash over the room whilst guests enjoy private views of the courtyard.

The Grand Pavilion is a completely flexible space – enjoy your ceremony and reception all in one room! There's time to relax with drinks in Hylands House or explore the glorious outdoor surroundings whilst we turn around the room for you.

## ROOM DIMENSIONS

25m x 18m

## ROOM CAPACITY

Ceremony/reception – maximum 300 guests

## ROOM HIGHLIGHTS

Large, flexible modern space permanent bar for your selected drinks supplier to use, an exclusive kitchen with an outdoor cooking area, uplighters, furniture and a PA system for speeches and background music





*Throughout the planning process we felt completely well informed and everything was so well organised. Even having a face to face final meeting to walk through the whole day was so reassuring.*

*We felt so well taken care of and we honestly didn't feel any stress throughout the day... we were so happy that we'd picked the perfect venue for our civil wedding!"*

H&M, 2022





## Getting ready in superior surroundings

We have transformed our wedding suite into luxurious spaces with tailor-made touches. These rooms have been inspired by the work of landscape architect Sir Humphry Repton who was hired to redesign the house and grounds in the 19th century. Liz Knight, a leading interior designer, and a resident artist at Hylands Estate has created a stunning backdrop for wedding parties getting ready for their special day.

## Wisteria Room

A breath-taking suite with huge antique mirrors to give brides a full view of their dress. There is hanging space to accommodate long wedding veils, dress trains and accessories. With fantastic views of the back lawn, the Wisteria Room is decorated with beautiful hand-painted images of the cascading purple flowers of this climbing plant – a key feature of the estate's Pleasure Gardens.





## Rose Room

This gorgeous adjacent room takes its lead from the classic rose garden close to Hylands House. It has a salon-worthy beauty area and plenty of seating with ornate velvet furnishings. It is the perfect suite for bridesmaids to get ready, with even more space than a high-end hotel!



## Repton Room

Ideal for the use by the groom and his party, this spacious new room overlooking the sweeping back lawn is named after Repton himself. The star of this room is its stunning William Morris feature wall. It has comfortable sofas and bespoke wardrobes with plenty of hanging space. Like with all rooms, it has a safe, fridges and integrated tea and coffee making facilities.





## Cultural & Multicultural Weddings

The impressive flexibility of our venue and the extensive knowledge within our expert team means no two days are made the same. Hylands Estate can suit your needs and is equipped to hold a variety of ceremony styles and reception sizes.

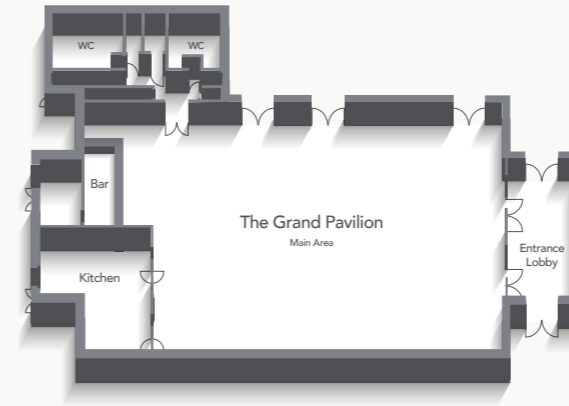
Visit our website for just some of the cultural and multi-cultural weddings we hold here at Hylands Estate.





# Room Plans

## Grand Pavilion Plan



### GRAND PAVILION

25 x 18 metres

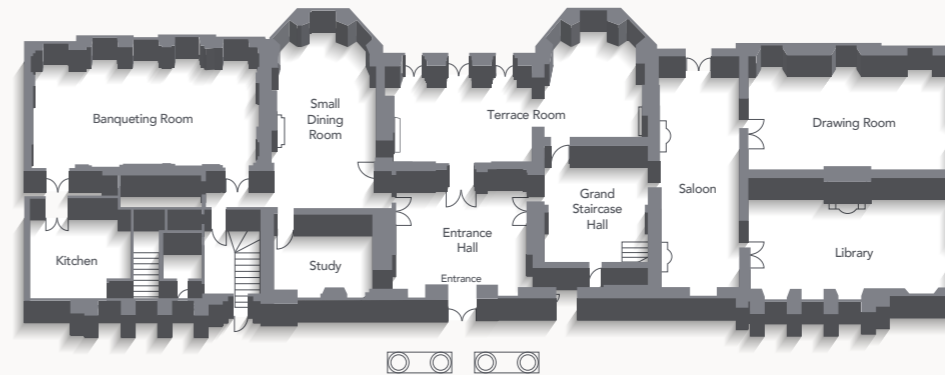
### LOBBY

10 x 5 metres

### KITCHEN

60 metres<sup>2</sup>

## Ground Floor Plan



### BANQUETING ROOM

12 x 7 metres

### THE LIBRARY

11.5 x 6.5 metres

### THE TERRACE ROOM

13.7 x 5.8 metres

### THE ENTRANCE HALL

8 x 7.3 metres

### DRAWING ROOM

11.5 x 6.5 metres

### THE SMALL DINING ROOM

7 x 5.5 metres

### THE STUDY

5 x 4.3 metres

# The Team

From your initial enquiry, a member of the Events and Weddings team will be at your disposal right up until your wedding day. With a range of wedding styles under our belts, our team will be on hand to welcome your guests, monitor the venue and assist with all the coordination on the day.

## Join us on social media

@HylandsEstateWeddings



## Events and Weddings Team

Hylands House  
Hylands Estate  
London Road  
Chelmsford  
Essex  
CM2 8WQ

T 01245 605500

E [hylands@chelmsford.gov.uk](mailto:hylands@chelmsford.gov.uk)

W [hylandsestateweddings.co.uk](http://hylandsestateweddings.co.uk)







Sian



Courtney



James



Sam



Grace



Tom



Amy



Sarah



Tracey

## Speak to the team

To arrange a viewing or to find out more about our weddings & upcoming open days please contact the events and weddings team.

T 01245 605500

E [hylands@chelmsford.gov.uk](mailto:hylands@chelmsford.gov.uk)



# Find Us

## Driving

---

**From Colchester**  
40mins

**From Stansted**  
40mins

**From Maidstone**  
50mins

**From Stratford**  
40mins

**From Finchley**  
60mins

**From Central London**  
90mins

## Train to Chelmsford

---

**From Colchester**  
25mins

**From Southend Victoria**  
60mins

**From Maidstone**  
120mins

**From Liverpool Street**  
35mins

**From Kings Cross**  
50mins

**From Paddington**  
60mins

Chelmsford Rail Station is in the city centre and a short taxi ride away from Hylands Estate.



[HYLANDESTATEWEDDINGS.CO.UK](http://HYLANDESTATEWEDDINGS.CO.UK)

Hylands House, Hylands Estate, London Road,  
Chelmsford, Essex. CM2 8WQ

E [hylands@chelmsford.gov.uk](mailto:hylands@chelmsford.gov.uk) T 01245 605500

All photographer credits can be found on our new website.