



# HYLANDS

— ESTATE —



## The Perfect Venue for Business Events



Hylands Estate offers an impressive setting for holding Business & Corporate events such as meetings, conferences and seminars. Surrounded by 574 acres of peaceful parkland, our opulent period interiors within the house and our crisp, contemporary Grand Pavilion can provide the perfect setting for your business event.

Hylands House and Grand Pavilion have a choice of many rooms to suit a variety of styles and capacities for up to 300 delegates.

Set amongst the most beautiful surroundings, Hylands House, with its glorious restored rooms, is the perfect location for photoshoots & filmings. Our large estate is also ideal for outdoor events such as concerts, charity events and shows.

With our dedication, flexibility and passion for our venue, we will help you create the perfect event.



[www.hylandsestate.co.uk](http://www.hylandsestate.co.uk)

Hylands House, Hylands Estate, London Road, Chelmsford, Essex, CM2 8WQ  
[hylands@chelmsford.gov.uk](mailto:hylands@chelmsford.gov.uk) 01245 605500



**HYLANDS**  
— ESTATE —

## Day Delegate Packages

Prices quoted are per delegate and are exclusive of VAT

### Package A

£35

(Minimum of 10 delegates)

**Includes:**

Appropriate space between 9am- 5pm  
Refreshment area for breaks & lunch  
Appropriate technical equipment  
Pads & pens  
Water & glasses

**Refreshments:**

Arrival tea, coffee & pastries  
Mid-morning tea, coffee & biscuits  
Lunch finger buffet with orange juice  
Mid-afternoon tea, coffee & biscuits

### Package B

£40

(Minimum of 20 delegates)

**Includes:**

Appropriate space between 9am- 5pm  
Refreshment area for breaks & lunch  
Appropriate technical equipment  
Pads & pens  
Water & glasses

**Refreshments:**

Arrival tea, coffee & pastries  
Mid-morning tea, coffee & biscuits  
Lunch hot fork buffet with orange juice  
Mid-afternoon tea, coffee & biscuits

### Package C

£20

(Morning or afternoon package)

**Includes:**

Appropriate space between  
9am- 1pm or 1pm-5pm  
Refreshment area for breaks  
Appropriate technical equipment  
Pads & pens  
Water & glasses

**Refreshments:**

Arrival tea, coffee & pastries  
An additional serving of tea, coffee & biscuits

[www.hylandsestate.co.uk](http://www.hylandsestate.co.uk)

Hylands House, Hylands Estate, London Road, Chelmsford, Essex, CM2 8WQ  
[hylands@chelmsford.gov.uk](mailto:hylands@chelmsford.gov.uk) 01245 605500



# HYLANDS — ESTATE —

## Catering Packages

Prices quoted are per delegate, per serving and are exclusive of VAT

### Light Refreshments

|                        |       |
|------------------------|-------|
| Tea & coffee           | £2.00 |
| Tea, coffee & biscuits | £2.20 |
| Tea, coffee & pastries | £2.50 |
| Orange juice           | £0.50 |

### Breakfast Package

(Minimum of 10 delegates)

|                                 |       |
|---------------------------------|-------|
| Tea & coffee                    |       |
| Orange juice                    |       |
| Breakfast pastries              |       |
| Sausage & bacon rolls           |       |
| Add an additional fruit platter | £2.00 |

---

### Lunch Packages

#### Finger Buffet

(Minimum 10 delegates)

A selection of sandwiches, rolls & wraps:

Roasted chicken salad

Houmous, spinach & sesame seeds

Cheddar cheese & tomato chutney

Egg mayonnaise & cress

Tuna mayonnaise

Savoury items:

Sausage rolls

Honey & sesame chicken skewers

Sweet potato, rocket & feta frittata

Broccoli & stilton quiche

Crudites & dips

Desserts:

Chocolate fudge brownie

Lemon drizzle

Fruit platter

£11.00

#### Hot Fork Buffet

(Minimum 15 delegates)

Main courses:

Mediterranean chicken with fresh herbs & olives

Fisherman's bake

Sweet potato & butternut squash chilli

Served with:

New potato salad

Homemade coleslaw

Mixed seasonal salad

Selection of breads

Desserts:

Fruit salad

Lemon tart

Chocolate cheesecake

£15.00

[www.hylandsestate.co.uk](http://www.hylandsestate.co.uk)

Hylands House, Hylands Estate, London Road, Chelmsford, Essex, CM2 8WQ  
hylands@chelmsford.gov.uk 01245 605500



## Audio Visual Technology



Hylands Estate offers state of the art audio visual technology, including:

- 86 and 65 inch Ctouch interactive screens with built-in computers
- ClickShare compatibility
- Video Conferencing facilities
- Sound System with microphones
- Wireless keyboard, mouse and presentation clickers



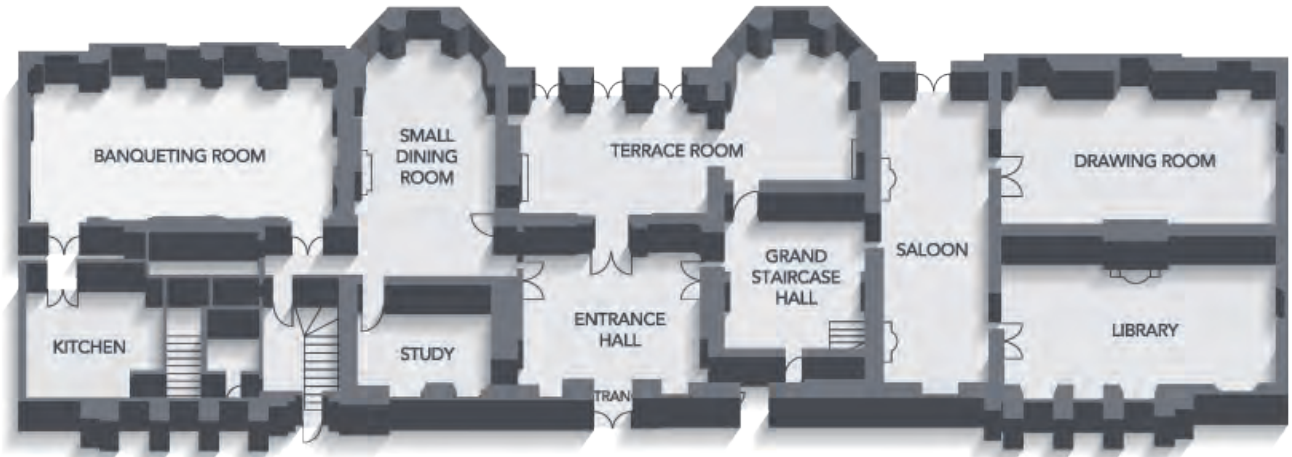
[www.hylandsestate.co.uk](http://www.hylandsestate.co.uk)

Hylands House, Hylands Estate, London Road, Chelmsford, Essex, CM2 8WQ  
hylands@chelmsford.gov.uk 01245 605500



# HYLANDS — ESTATE —

## Floor Plan: Hylands House Ground Floor



### Hylands House West Wing

#### THE BANQUETING ROOM

|            |       |
|------------|-------|
| Capacity:  |       |
| Theatre    | 100   |
| Boardroom  | 40    |
| Cabaret    | 50    |
| Dinner     | 80    |
| Dimensions | 12x7m |

#### THE TERRACE ROOM

|            |           |
|------------|-----------|
| Capacity:  |           |
| Cafe       | 60        |
| Dimensions | 13.7x5.5m |

### Hylands House East Wing

#### THE DRAWING ROOM

|            |         |
|------------|---------|
| Capacity:  |         |
| Theatre    | 70      |
| Boardroom  | 20      |
| Cabaret    | 40      |
| Dimensions | 11x6.5m |

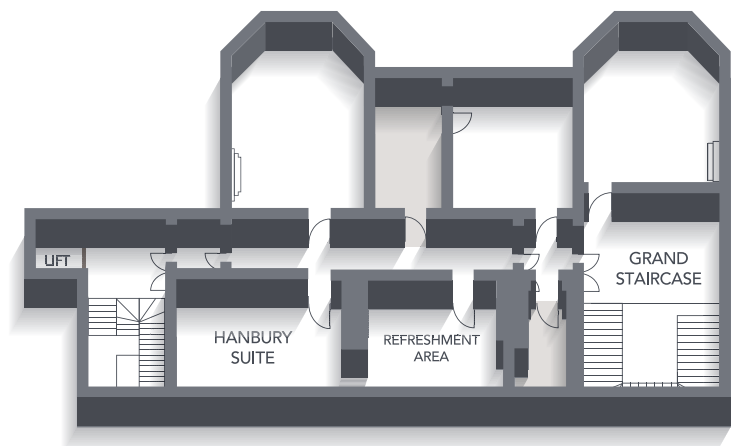
#### THE LIBRARY

|            |         |
|------------|---------|
| Capacity:  |         |
| Boardroom  | 20      |
| Dimensions | 11x6.5m |

## Floor Plan: Hylands House First Floor

#### THE HANBURY SUITE

|            |           |
|------------|-----------|
| Capacity:  |           |
| Boardroom  | 10        |
| Dimensions | 3.6x3.59m |



[www.hylandsestate.co.uk](http://www.hylandsestate.co.uk)



**HYLANDS**  
— ESTATE —

## Floor Plan: Grand Pavilion

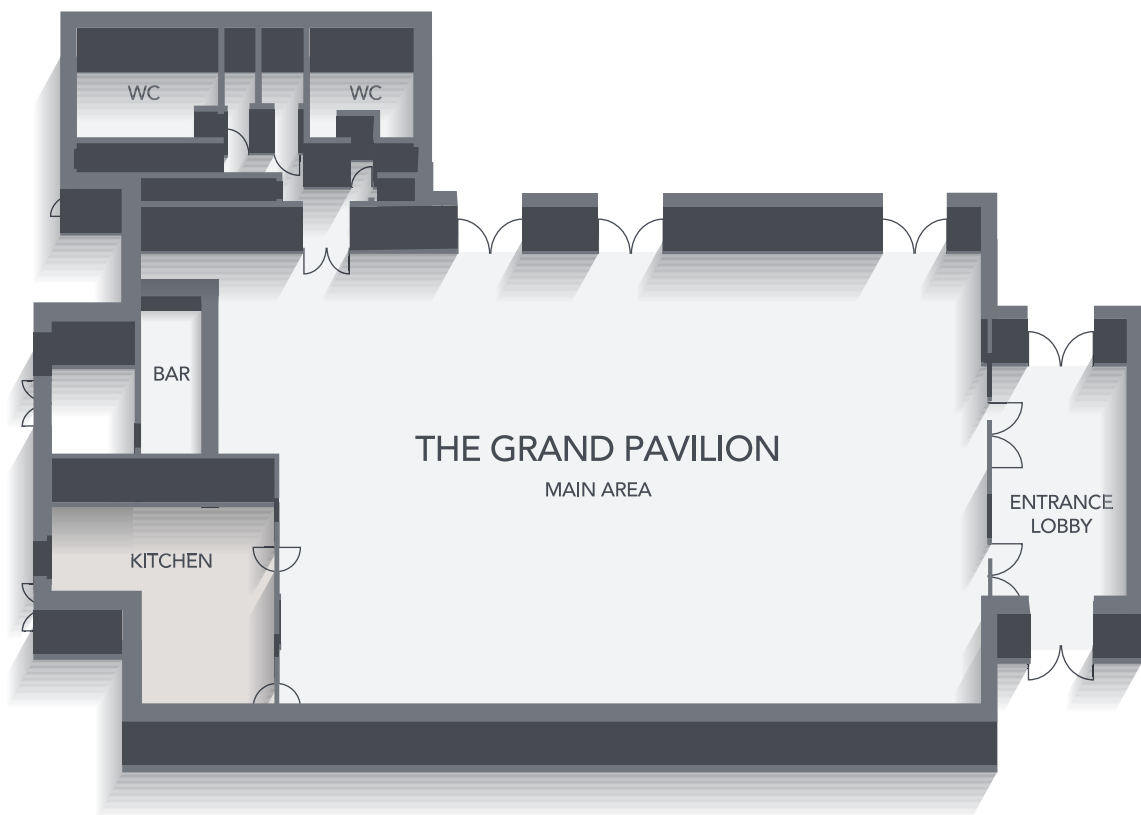
Capacity:

Theatre: 300

Cabaret: 200

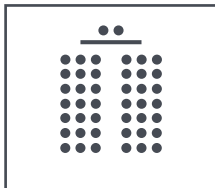
Dinner: 300

Dimensions: 25x18m

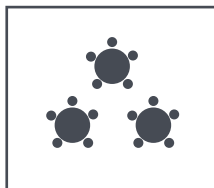


## Seating Layouts

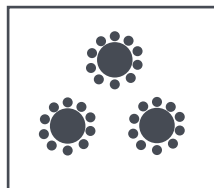
Theatre



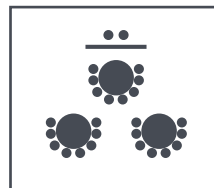
Cafe



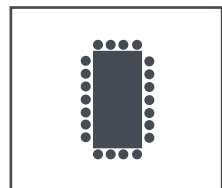
Dinner



Cabaret



Boardroom



[www.hylandsestate.co.uk](http://www.hylandsestate.co.uk)

Hylands House, Hylands Estate, London Road, Chelmsford, Essex, CM2 8WQ  
hylands@chelmsford.gov.uk 01245 605500

## Make an Enquiry



Our experienced Events Team can advise you not only on the venue itself but on all aspects of your hire. To discuss your event further please contact the Events Team.

01245 605500

[hylands@chelmsford.gov.uk](mailto:hylands@chelmsford.gov.uk)

[www.hylandsestate.co.uk](http://www.hylandsestate.co.uk)

## Our Location

### From M25/ London

Exit the M25 at Junction 28 on to the A12 towards Chelmsford and Colchester.

Exit the A12 at Junction 15 on to the A414 dual carriageway toward Chelmsford.

### By Train

Chelmsford Railway Station is in the city centre and a short taxi ride away from Hylands Estate.



## Join us on Social Media



@hylandsestate



hylands\_estate



@HylandsEstate

[www.hylandsestate.co.uk](http://www.hylandsestate.co.uk)

Hylands House, Hylands Estate, London Road, Chelmsford, Essex, CM2 8WQ  
[hylands@chelmsford.gov.uk](mailto:hylands@chelmsford.gov.uk) 01245 605500